

Click Energy Guide

How to read your meter.

This handy leaflet will show you how to submit meter readings for Keypad and Credit Meters.



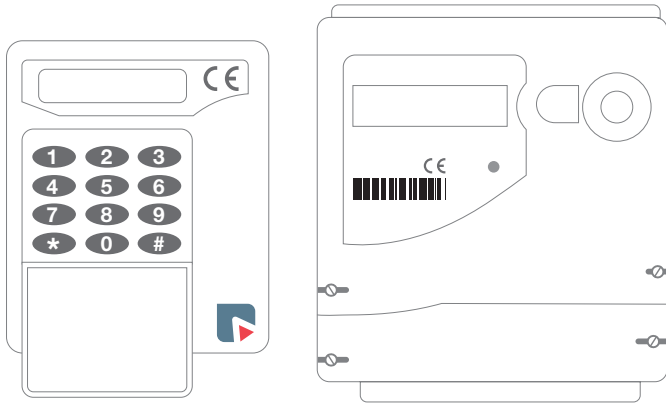
you click, you save.

Keypad Meters

Standard 24 hr

This is the most common type of keypad meter.

- ⇒ To read your 24 hr keypad meter, simply **press 9** on your keypad meter and read the numbers from left to right.



Multi-Rate Keypad Meters (Economy 7 & Powershift)

For multi-rate keypad meters:

- ⇒ **Press 3** on your keypad or freedom unit for your first read,
- ⇒ **Press 3** again for your second (or additional reads)

Note: 'Day/Night' keypad meters will have 2 reads, 'Economy 7' keypad meters have up to 3 reads, and 'Powershift' keypad meters have 4 reads.

Credit Meters

Standard 24 hr

Standard meters are the most common and have one row of numbers.



Ignore numbers in red

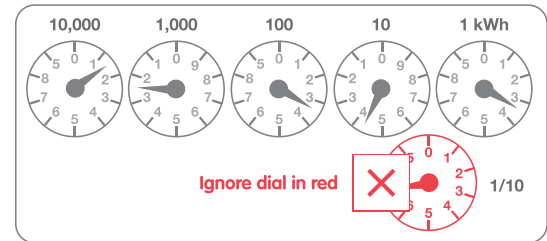
To read this type of meter:

- ⇒ Read the numbers from left to right, including **any zeros**.
- ⇒ **Ignore** any numbers after the decimal point or in red.
- ⇒ E.g. the reading for this meter is 05812.

Dial (Clock Meter)

If you have a dial/clock meter it will have six dials.

To take your meter reading, you'll need to read the dials on the top row.



To read this type of meter:

- ⇒ Read the numbers from left to right.
- ⇒ If the dial **is between** two numbers, round down to the lowest number. If the dial is between 9 and 0, round down to 9.
- ⇒ **Ignore** any dials in red.
- ⇒ E.g. the reading for this meter is 12343.

Economy 7 Meter

Economy 7 (Day/Night) Meters have two rows of numbers to separately record the electricity you use during both day

and night. These rows may be labelled as Day and Night, 1/I (Night) and 2/II (Day) or Low (Night) and Normal (Day).



Ignore numbers in red

To read this type of meter:

- ➔ For each row, read the numbers from left to right including **any zeros**.
- ➔ **Ignore** any numbers after the decimal point or in red.
- ➔ E.g. the day reading for this meter is 12763 and the night reading is 07759.

Digital Meter

Digital meters have an electronic display which changes automatically. You may also have a blue button which allows you to scroll through the screens.

For 24 hr Digital Meters:

- ➔ Scroll or wait until you see the screen with 'KWH' - **this is your reading**.
- ➔ Write down the numbers from right to left, including **any zeros**, and ignoring any numbers after the decimal point.

For Day/Night or Nightsaver/Weekender Rate Digital Meters:

- ➔ **Scroll** or wait until you see the 'R1' and 'R2' screens. R1 is your Day reading, and R2 is your Night reading. Write down the numbers on the screen from right to left, including **any zeros**, and ignoring any numbers after the decimal point.

Note: some Nightsaver customers may also have a 'R3' reading, if you have a separately metered storage heater.

Follow us on  **ClickEnergy NI** and on  **clickenergychat** for the chance to win great prizes.

Project Plug Limited T/A ClickEnergy is a limited company, registered in Northern Ireland – company number - NI626418. Registered address – ClickEnergy, 1st Floor, Timberquay, 100-114 Strand Road, Derry/Londonderry BT48 7NR VAT registration Number: 197 2110 09. ClickEnergy is regulated by the Utility Regulator for Northern Ireland.